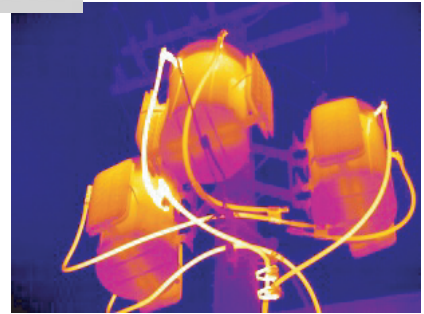


# K6700

## SPECTRA-SCAN



### **The K6700 Offers High Performance At An Affordable Price**

Lightweight and easy to use, the K6700 infrared camera helps you quickly and accurately locate problems. View crisp infrared images in the reciprocating high-resolution viewfinder, ideal for outdoor and indoor inspections. Designed to grow with your thermal imaging needs, the K6700 infrared camera is upgradeable to the ISG K6800. This fully-radiometric camera is ergonomically designed for comfortable one-handed point-and-shoot operation.

### **Learn more about the K6700 Infrared Camera**

To learn more about the K6700 SpectraScan infrared camera inspection system and how it can help you locate problems, avoid costly shutdowns, and save money.

**Call us today!**



**ISG**

Thermal Systems USA, Inc. [www.isginfrared.com](http://www.isginfrared.com) (877) 733-3473

# Technical Specifications



## Image Performance

|                           |   |
|---------------------------|---|
| Thermal Lens:             | 50mm / 24°H x 18°V  |
| Focus:                    | 13" to infinity   |
| Spatial Resolution:       | 1.3 mrad  |
| Image Sensitivity / NETD: | .08°C @ 30°C  |
| Image Frame Rate:         | 60 Hz NTSC / 50 Hz PAL, non-interlaced                          |
| Detector Type:            | Focal Plane Array(FPA) uncooled microbolometer 320 x 240 pixels |
| Fill Factor:              | >80%  |
| Spectral Band:            | 8 ~ 14 um   |
| Image Zoom:               | 8X Incremental (with spatial filtering)                         |

## Image Presentation

|                          |  |
|--------------------------|--|
| B&W / Color Image:       | Multiple palettes available                  |
| Auto Gain Control (AGC): | Automatic level, gain adjustment             |
| Viewfinder:              | Built in high-resolution TFT                 |
| Video Output:            | RS-170 EIA/NTSC or CCIR/ PAL composite video |

## Measurement

|                                      |  |
|--------------------------------------|--|
| Temperature Range:                   | Range 1: -40°C ~ 150°C (-40°F ~ 302°F)                             |
|                                      | Range 2: 120°C ~ 600°C (248°F ~ 1112°F)                            |
| Accuracy:                            | ± 2% or 2°C of reading   |
| Atmospheric Transmission Correction: | Input correction for humidity, temperature, and measuring distance |
| Emissivity Setting:                  | Auto based on user input   |
| Peak Temperature Tracking:           | On-screen cursor tracks highest or lowest temperature in scene     |
| Isotherm:                            | Variable bandwidth and multi-color available                       |
| Temperature Span Setting:            | Automatic / Manual (1/10° increment)                               |
| Temperature Range Setting:           | Automatic / Manual (1/10° increment)                               |
| Measurement Modes:                   | Single point moveable  |
| Alarms:                              | User defined upper or lower  |

## Image Storage

|                |                                     |
|----------------|-------------------------------------|
| File Format:   | 14-Bit radiometric IR digital image |
| Image Storage: | 500 images / 128Mbyte flash card    |

## Environmental

|                                 |                            |
|---------------------------------|----------------------------|
| Operating Temperature:          | -25°C ~ 50°C               |
| Storage Temperature:            | -40°C ~ 70°C               |
| Humidity Operating and storage: | 10% to 95%, non-condensing |
| Enclosure / Protection:         | IP 54 IEC60536-2           |
| Shock Resilience:               | 20G                        |
| Vibration:                      | 2G                         |

## Electrical

|                        |                                      |
|------------------------|--------------------------------------|
| Power Requirements:    | 7.2V DC 5W Typical                   |
| External Power Supply: | 90-240 VAC input 12 VDC output       |
| Battery Operation:     | 150 Minutes (Li-ion Battery) typical |

## Physical

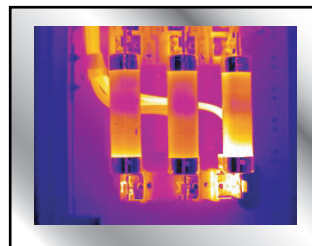
|                         |  |
|-------------------------|--|
| Camera Weight:          | 1.75 KG (3.85 Lbs.), including battery |
| Enclosure / Protection: | IP 54 IEC 529 Housing                  |
| Tripod mount:           | 1/4" - 20                              |

## Optional Features

|                      |           |
|----------------------|-----------|
| Lenses:              | 12° FOV   |
| Lens Identification: | Automatic |

### External LCD

|                          |          |
|--------------------------|----------|
| Remote view 3.5" TFT LCD |          |
| with camera control:     | Optional |
| 3.5" TFT LCD Panel:      | Optional |



ISG Thermal Systems Ltd.  
Integrated House,  
Repton Court, Repton Close  
Basildon, Essex SS13 1LN UK

Phone: +44 (0) 1268-527700  
Fax: +44 (0) 1268-527799  
Email: [sales@isgthermalsystems.co.uk](mailto:sales@isgthermalsystems.co.uk)  
URL: [www.isgthermalsystems.co.uk](http://www.isgthermalsystems.co.uk)

Thermal Systems USA, Inc.  
190 Stanley Court  
Lawrenceville, GA 30045 USA

Phone: (678) 442-1234  
Fax: (678) 442-1295  
Email: [sales@isginfrared.com](mailto:sales@isginfrared.com)  
URL: [www.isginfrared.com](http://www.isginfrared.com)



**ISG**  
Thermal Systems USA, Inc.

[www.isginfrared.com](http://www.isginfrared.com)

(877) 733-3473